

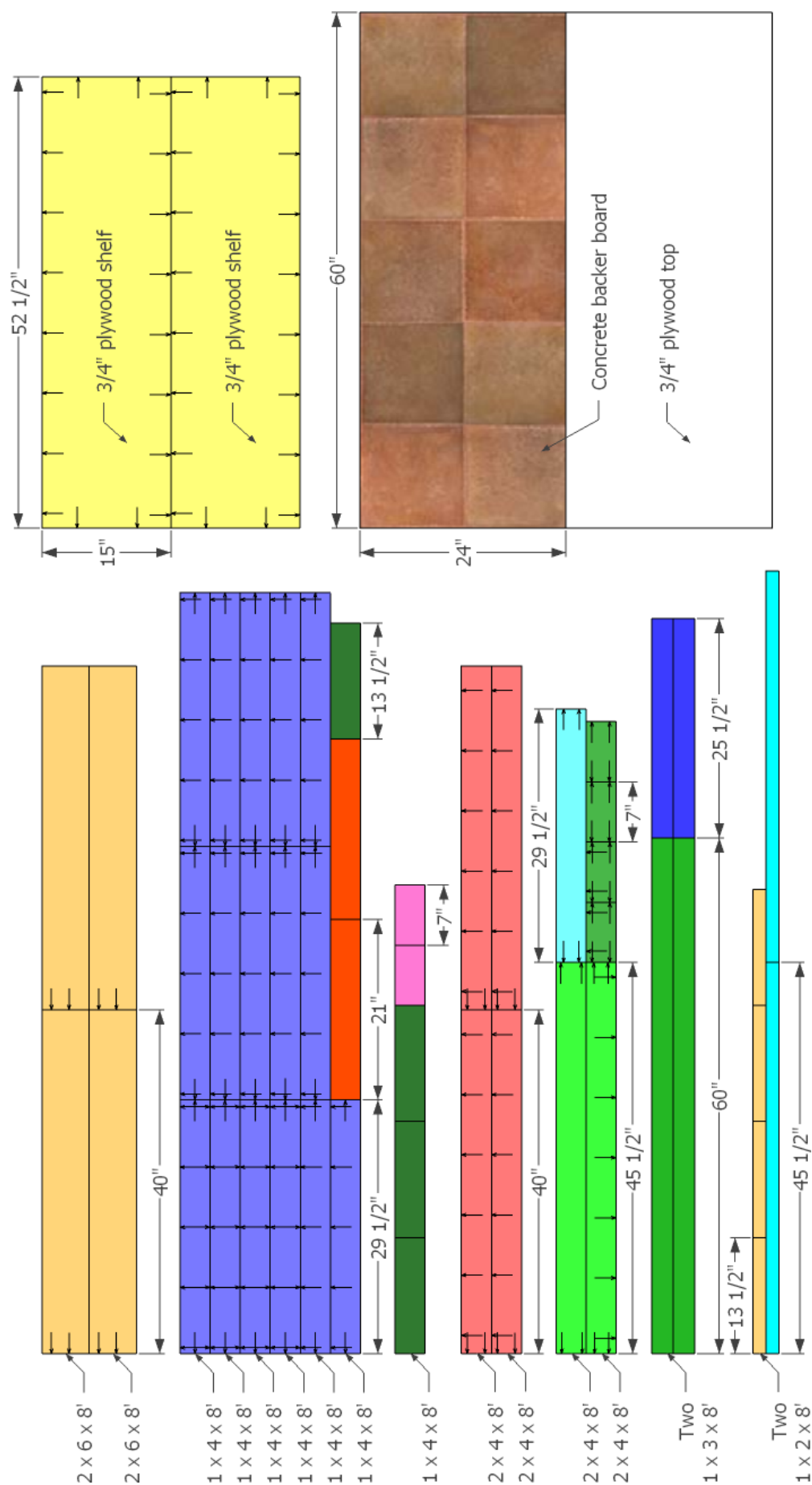
## DIY Outdoor Bar

Copyright © 2014 Shanty-2-Chic.com

### Supply List

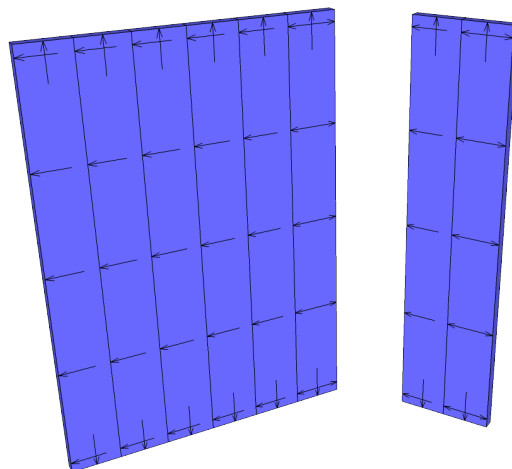
Item	Quantity	Description
2 x 6 x 8'	2	Pine or whitewood board
1 x 4 x 8'	7	Pine or whitewood board
2 x 4 x 8'	4	Pine or whitewood board
1 x 3 x 8	2	Pine or whitewood board
1 x 2 x 8'	2	Pine or whitewood board
4' x 8' x 3/4" plywood	2	
1-1/4" pocket hole screws	199	
2-1/2" pocket hole screws	48	
Wood glue		
Brad nails	handful	
Concrete backer board		Enough to cover 24" x 60"
12" tiles	10	
Thinset and grout		

The arrows indicate pocket holes.



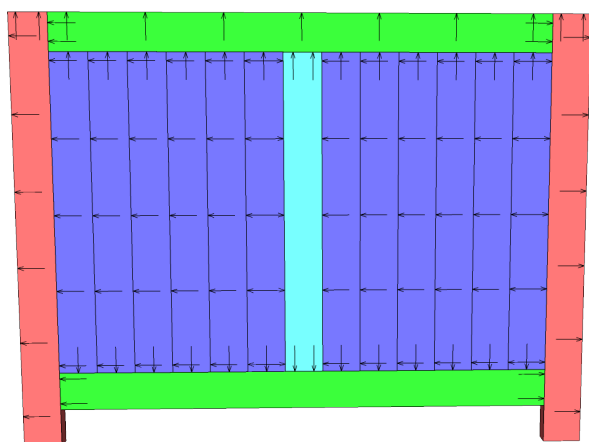
# 1

Assemble two large and two small panels with glue and 1-1/4" pocket hole screws. Make sure that one end piece on every panel has pocket holes going in the opposite direction as well.



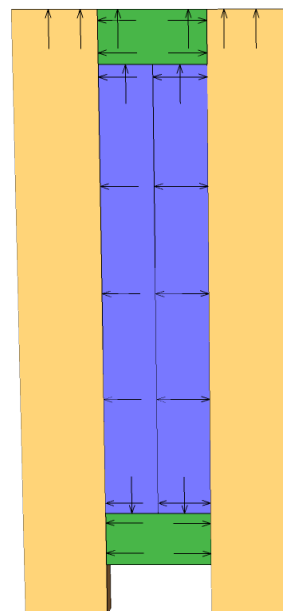
# 2

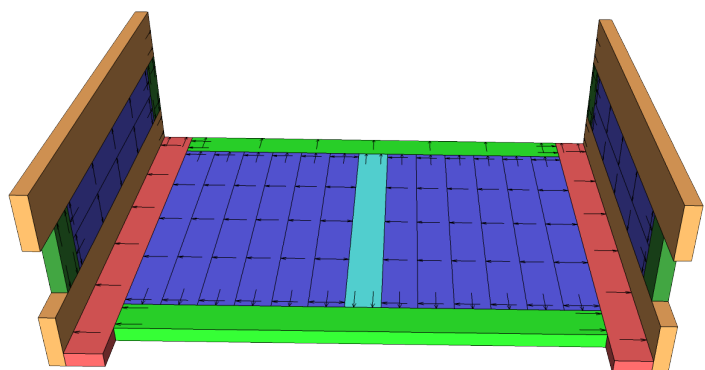
Frame the two larger panels with 2 x 4 pieces. All of the pocket holes in the 2 x 4's should be for 2-1/2" pocket hole screws except the pocket holes that will be used to secure the top. Those need to be drilled for 1-1/4" pocket hole screws. Assemble everything with glue and pocket hole screws. Make sure the panels are flush with the 2 x 4's on the side with the pocket holes.



# 3

Frame the two smaller panels. Again, the 2 x 4 pieces are connected with 2-1/2" pocket hole screws and holes for 1-1/4" pocket hole screws are drilled in the tops to connect the top later.



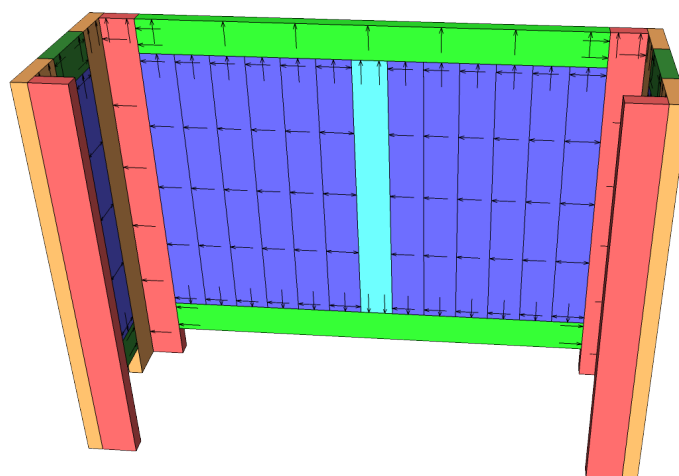


4

Connect the two side assemblies to the front assembly with glue and 2-1/2" pocket hole screws.

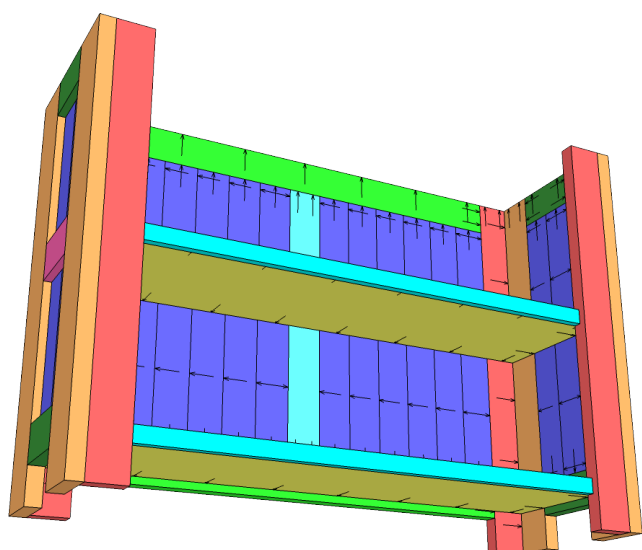
5

Add the back 2 x 4 legs. Connect these with glue and 2-1/2" pocket hole screws as well.



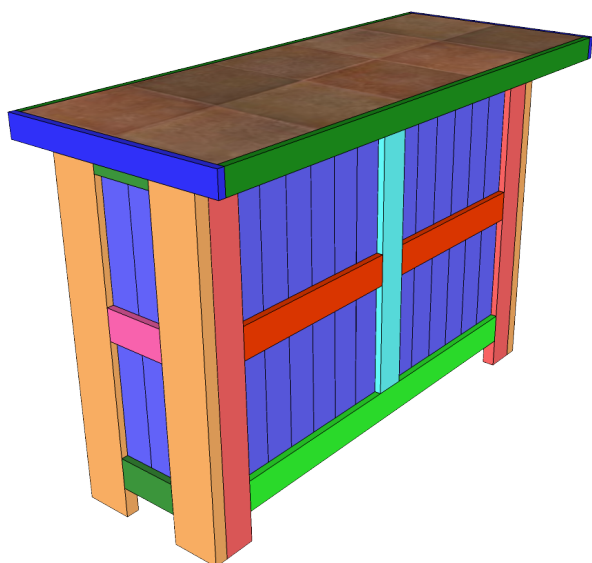
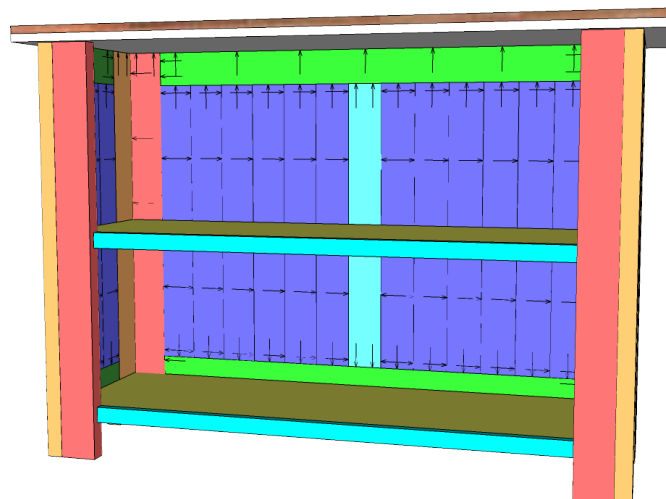
6

Attach the two shelves. These can be positioned at whatever height you choose to get a custom spacing. Use 1-1/4" pocket hole screws. Then attach the front trim piece to the shelves. You can either attach these with 1-1/4" pocket hole screws or use brad nails.





Next, add the top layer of plywood. Secure it with 1-1/4" pocket hole screws from below. Then add your concrete backer board to the top of the plywood.



Next, tile the top and add the trim pieces around the edges with glue and brad nails. Then add the horizontal 1 x 4 boards to the outside of the bar. These are glued in place and secured with brad nails.



This step is optional. You can easily add a wine glass holder by using a few strips of 1 x 4 and 1 x 2. Glue and brad nail the smaller strips on first. Then add the 1 x 4 boards. The spacing should be determined by the glasses you choose on using. Next, sand, stain, and finish as you wish. As always, if you decide to make this super easy outdoor bar be sure to stop by our website and let us know!

